

The Poplar Creek Public Library
Streamwood, IL

Frye Gillan Molinaro Architects
Chicago, IL

AJ Rosales, Principal
AIA, LEED AP BD+C



2006



CONCEPT - TRANSFORMATION / IDENTITY

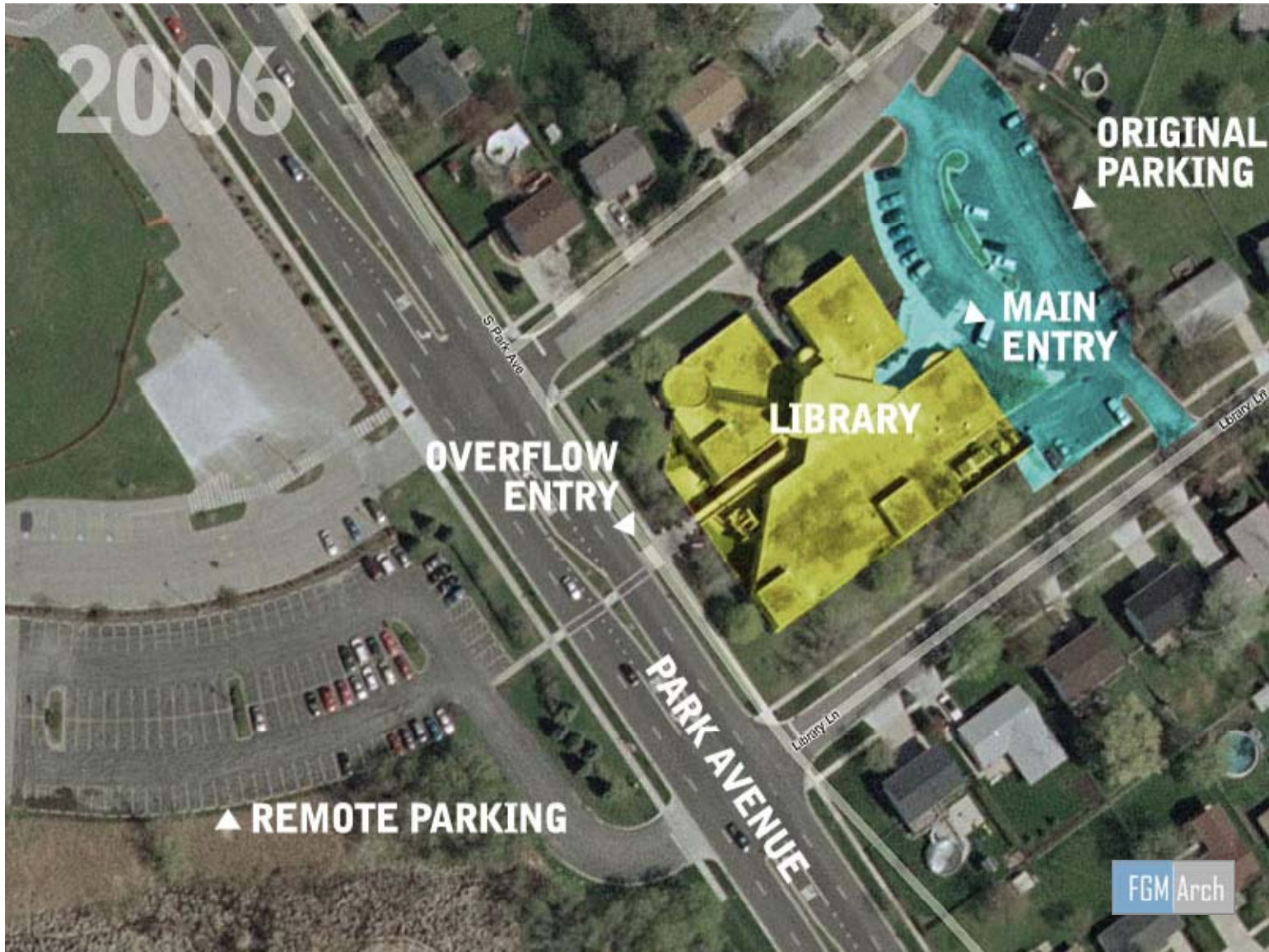
FGM Arch

2009



FGM Arch

2006



ORIGINAL
PARKING

MAIN
ENTRY

LIBRARY

OVERFLOW
ENTRY

▲ REMOTE PARKING

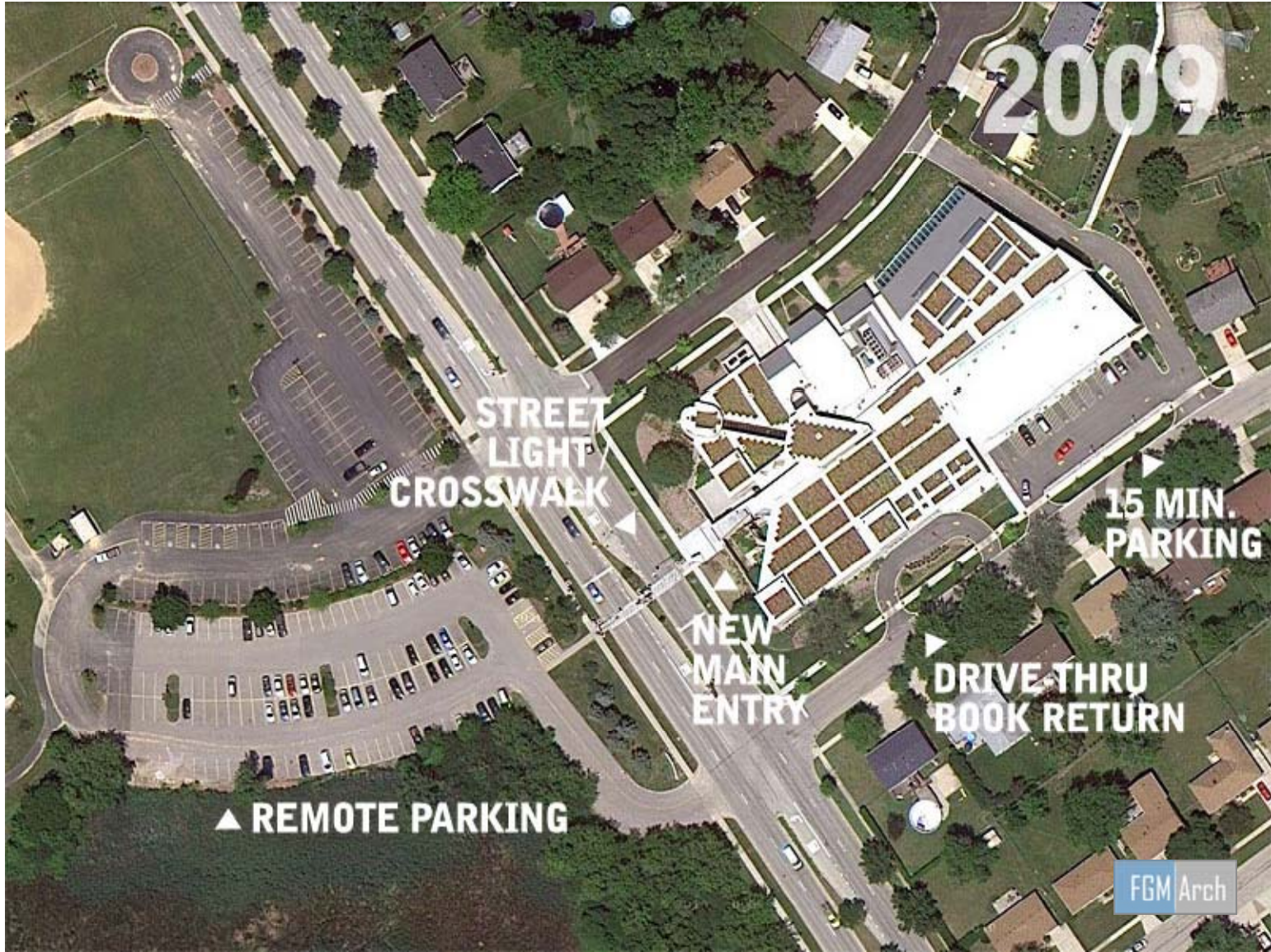
PARK AVENUE

S Park Ave

Library Ln

Library Ln

FGM Arch



2009

STREET
LIGHT
CROSSWALK

15 MIN.
PARKING

NEW
MAIN
ENTRY

DRIVE THRU
BOOK RETURN

▲ REMOTE PARKING

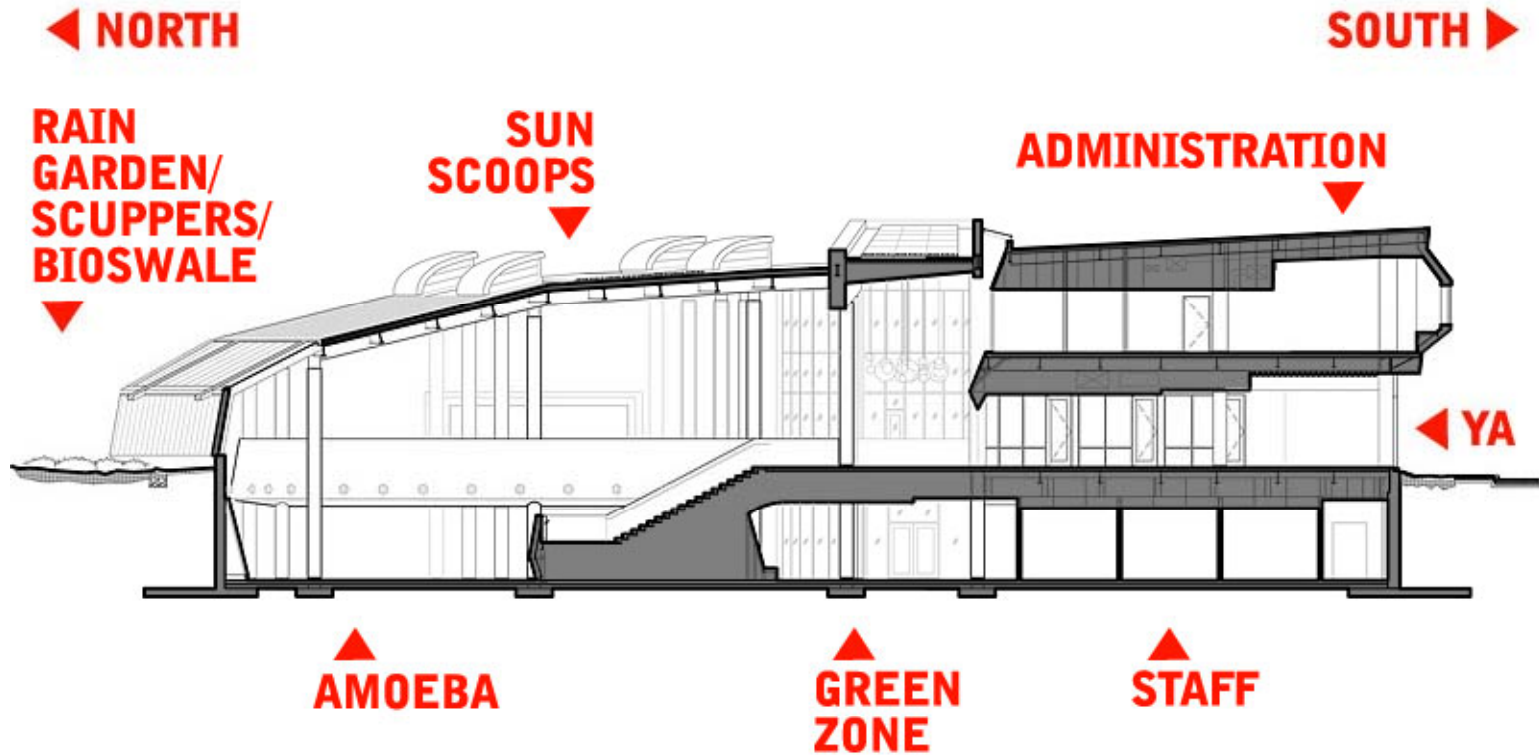
FGM Arch



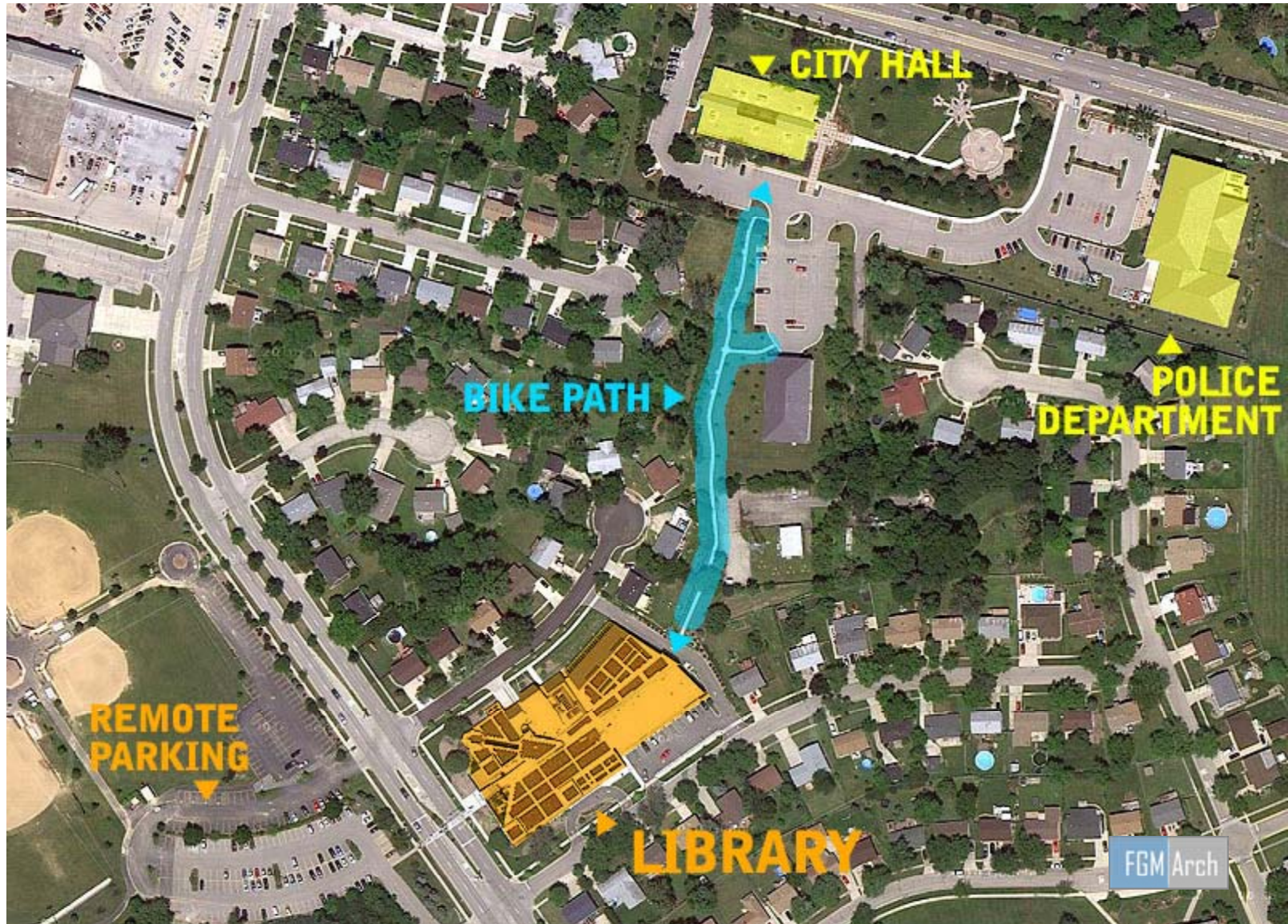


NEW ADDITION SOUTH FAÇADE

FGM Arch



SECTION THROUGH ADDITION



▼ CITY HALL

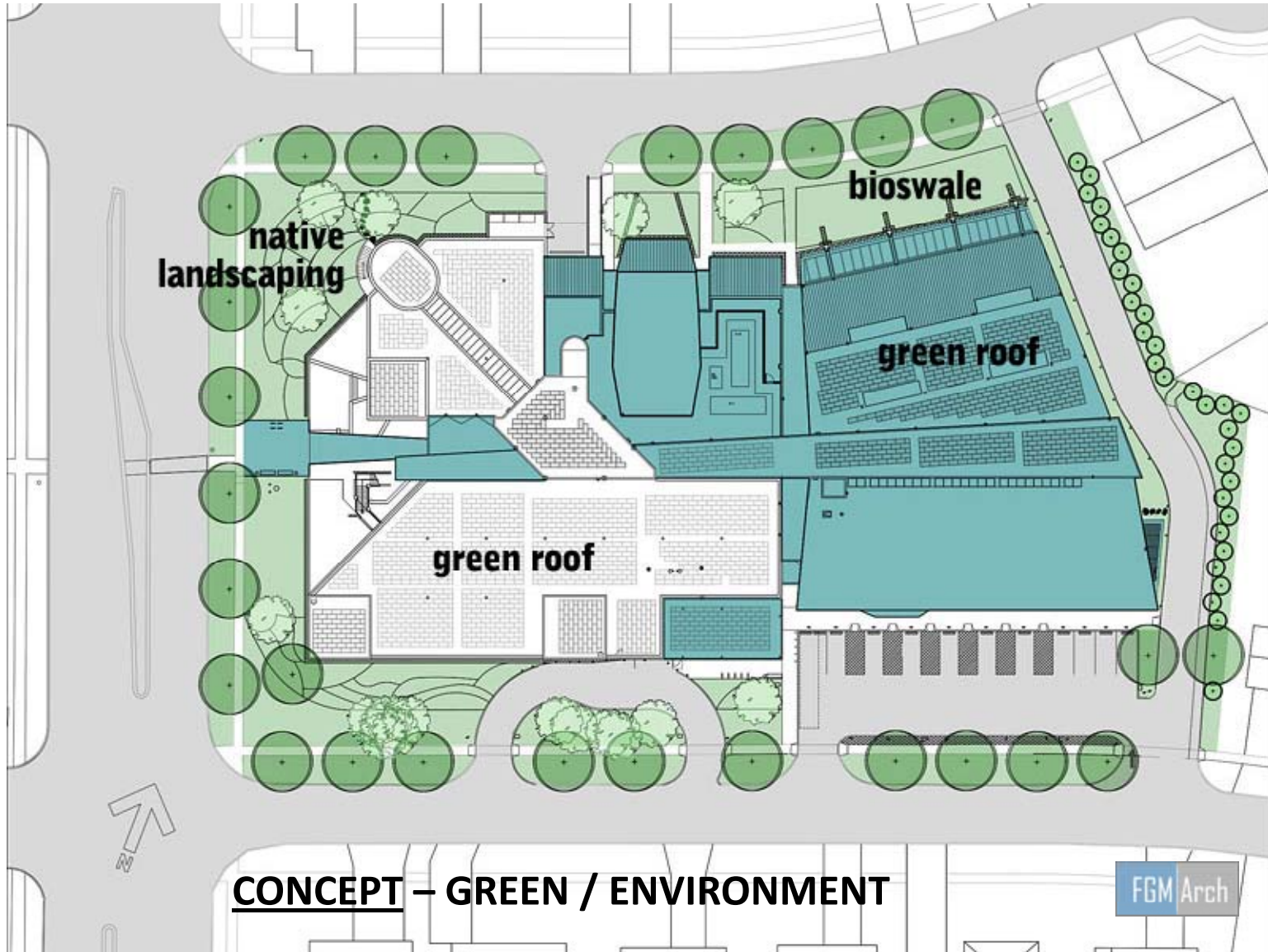
BIKE PATH ▶

▶ POLICE DEPARTMENT

▶ REMOTE PARKING

▶ LIBRARY

FGM Arch

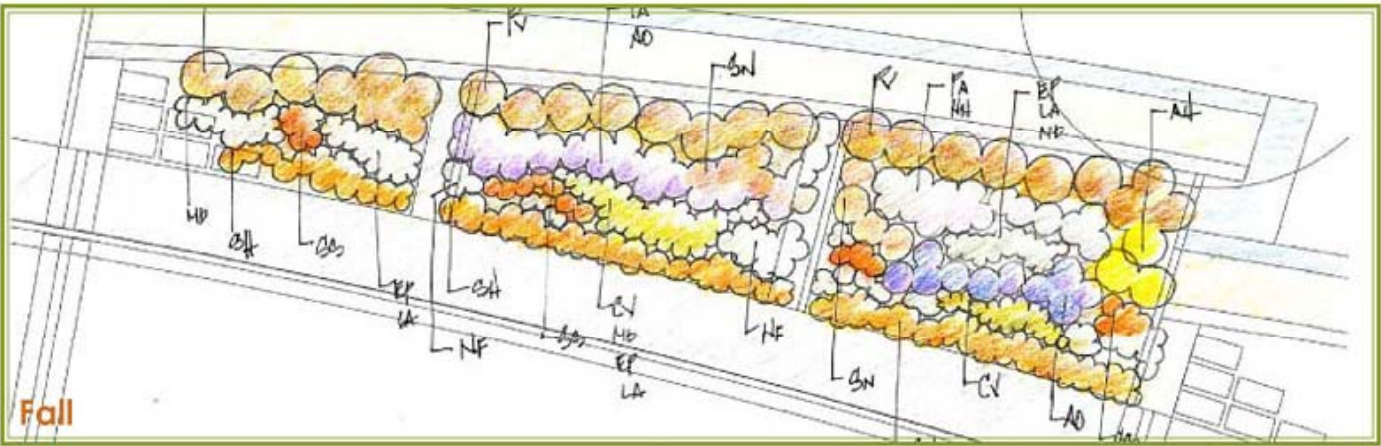
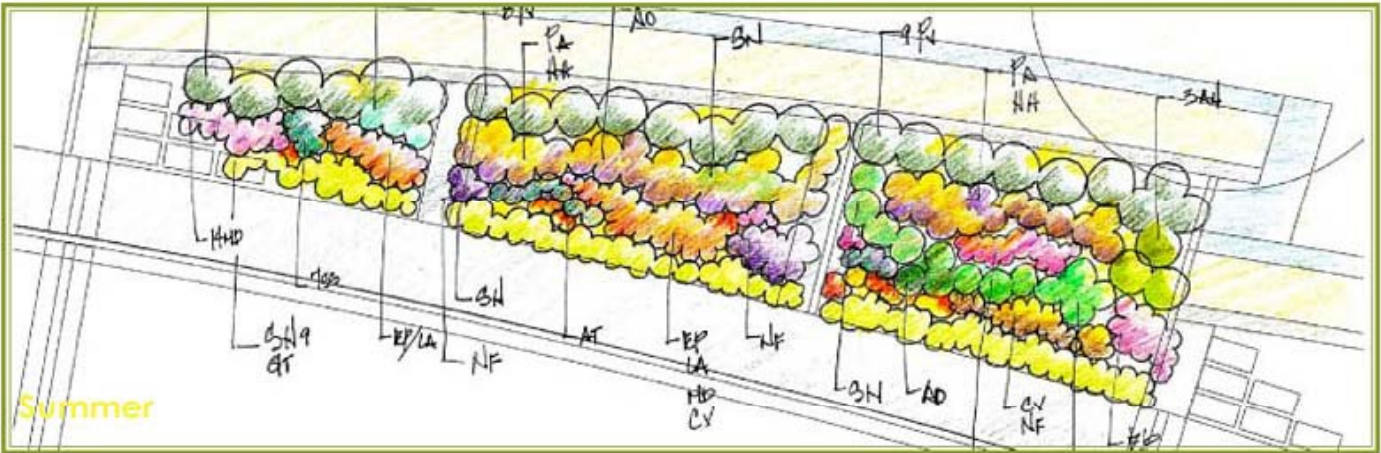


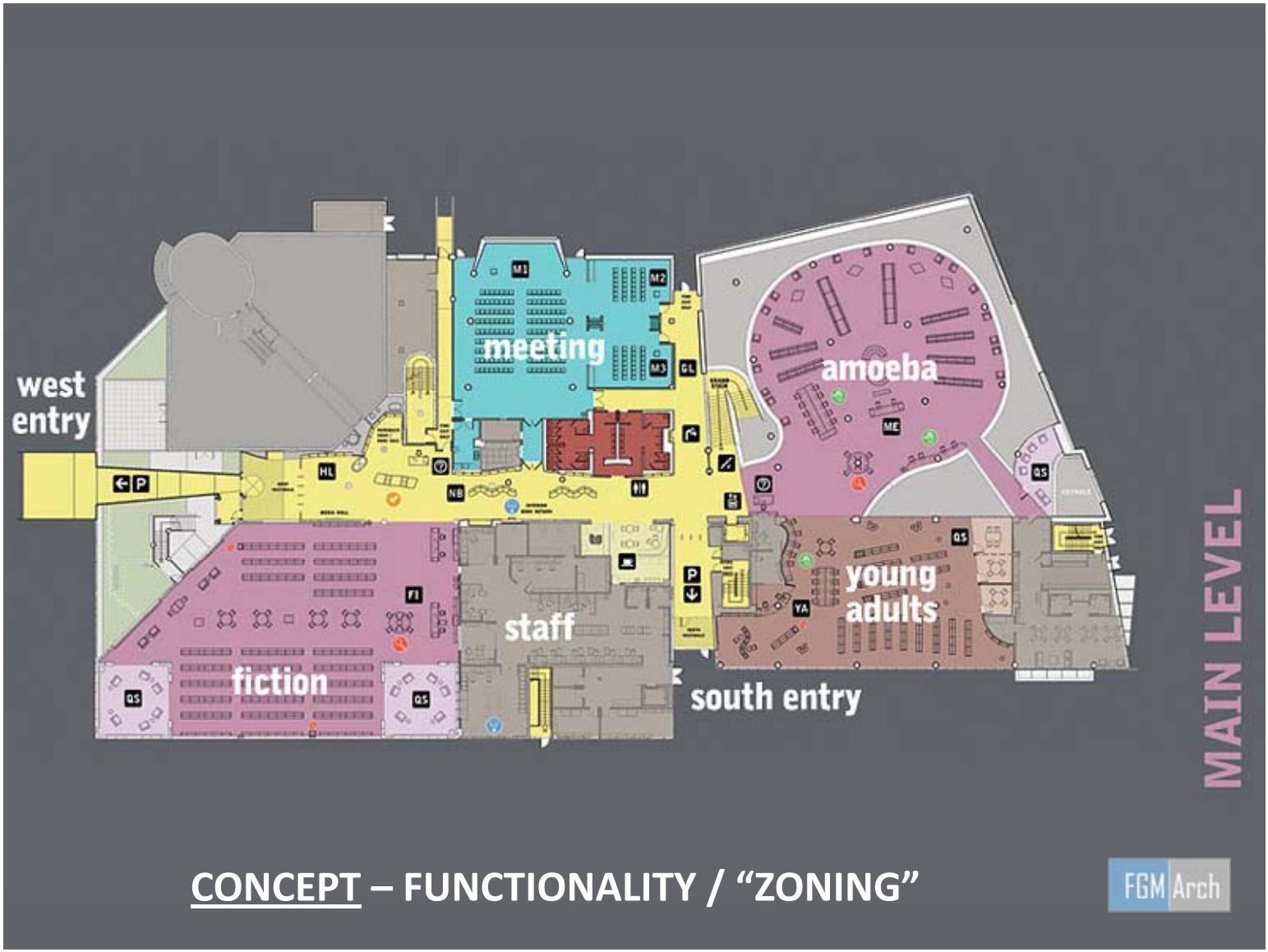
CONCEPT - GREEN / ENVIRONMENT

FGM Arch

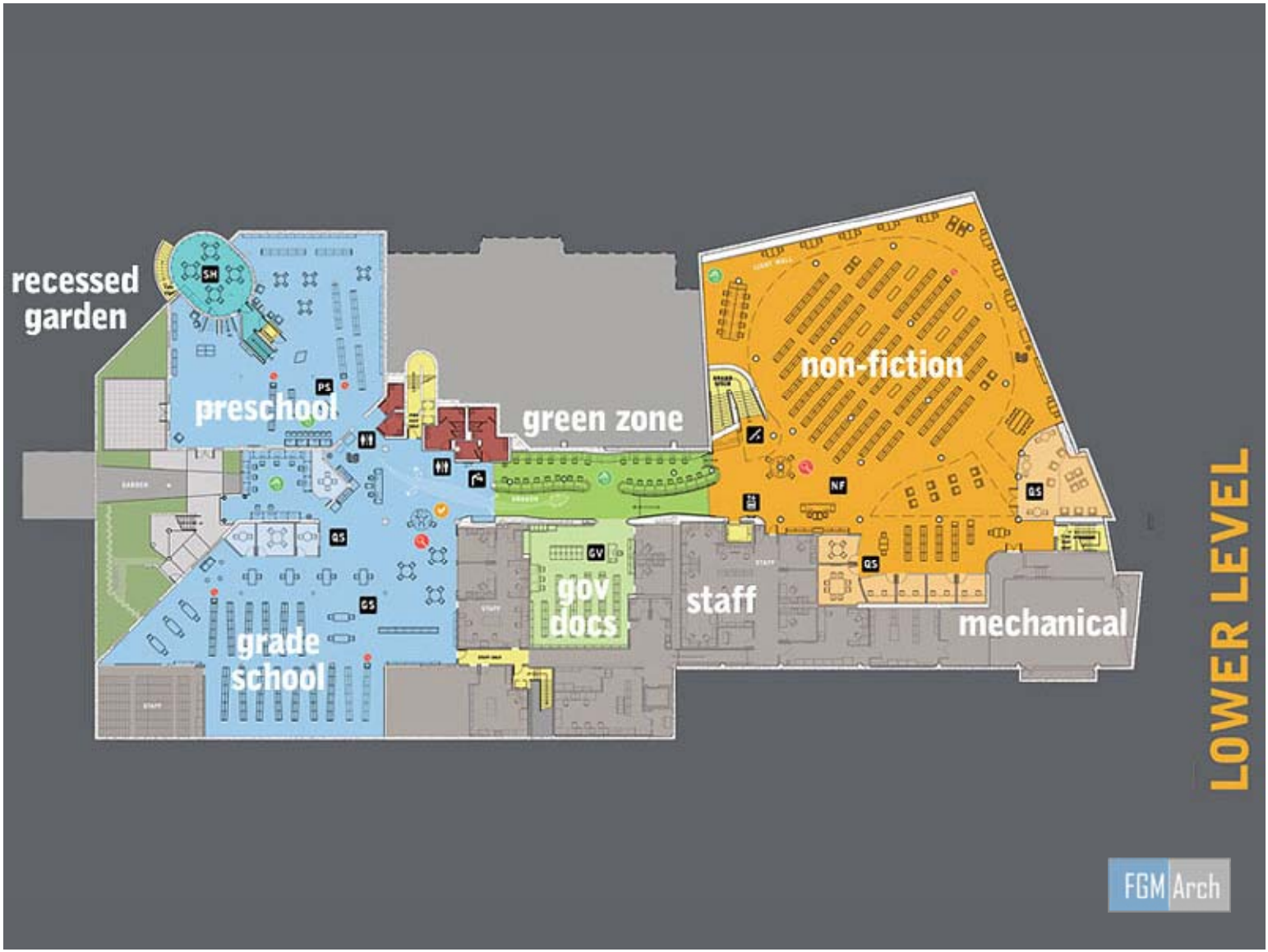






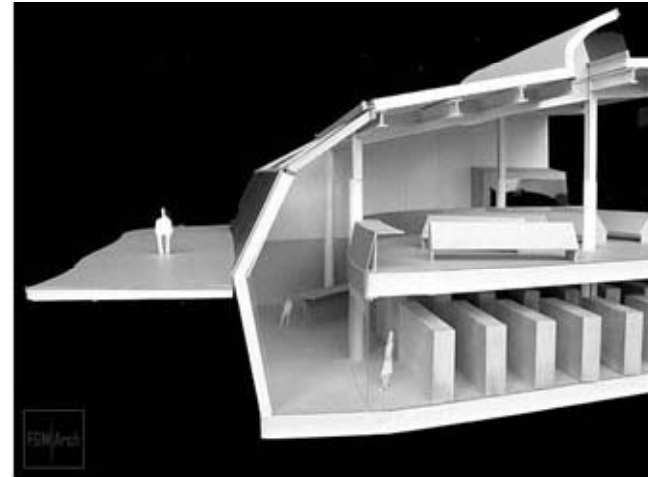
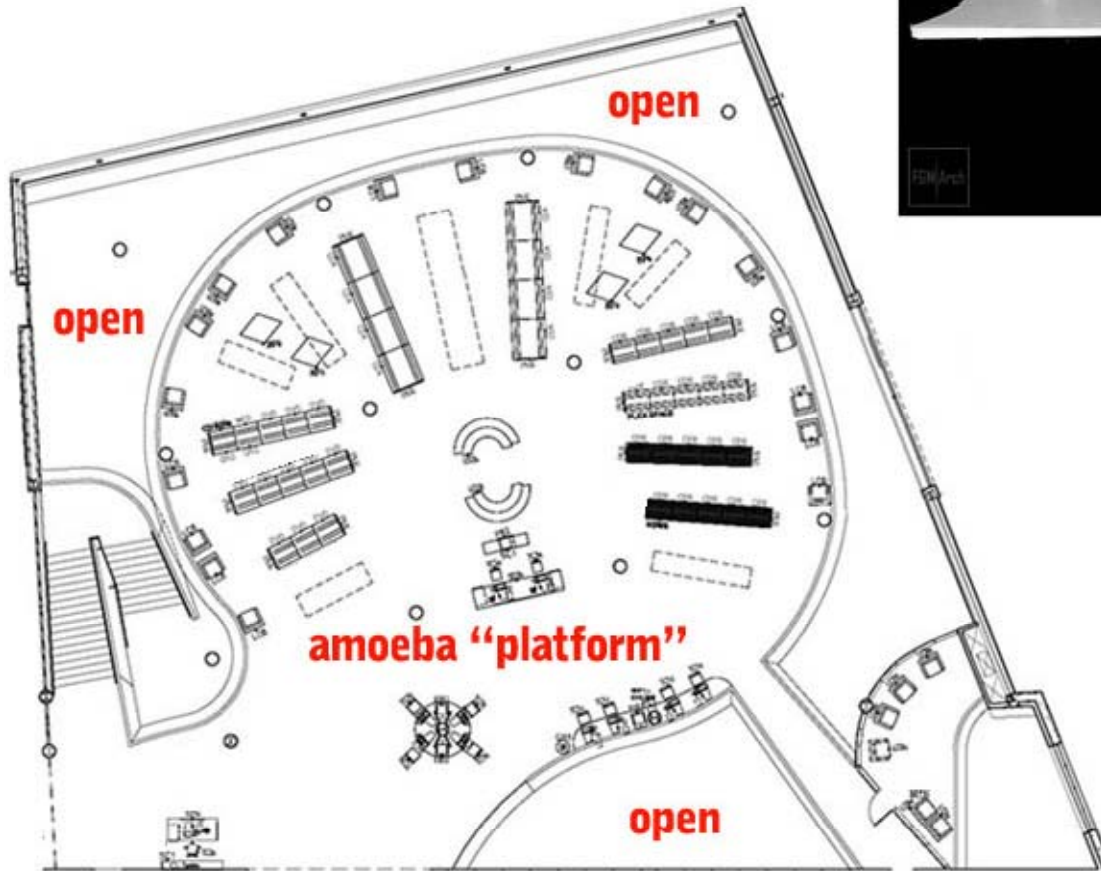


CONCEPT – FUNCTIONALITY / “ZONING”



LOWER LEVEL

THE AMOEBA









ADULT STUDY



YOUTH STUDY

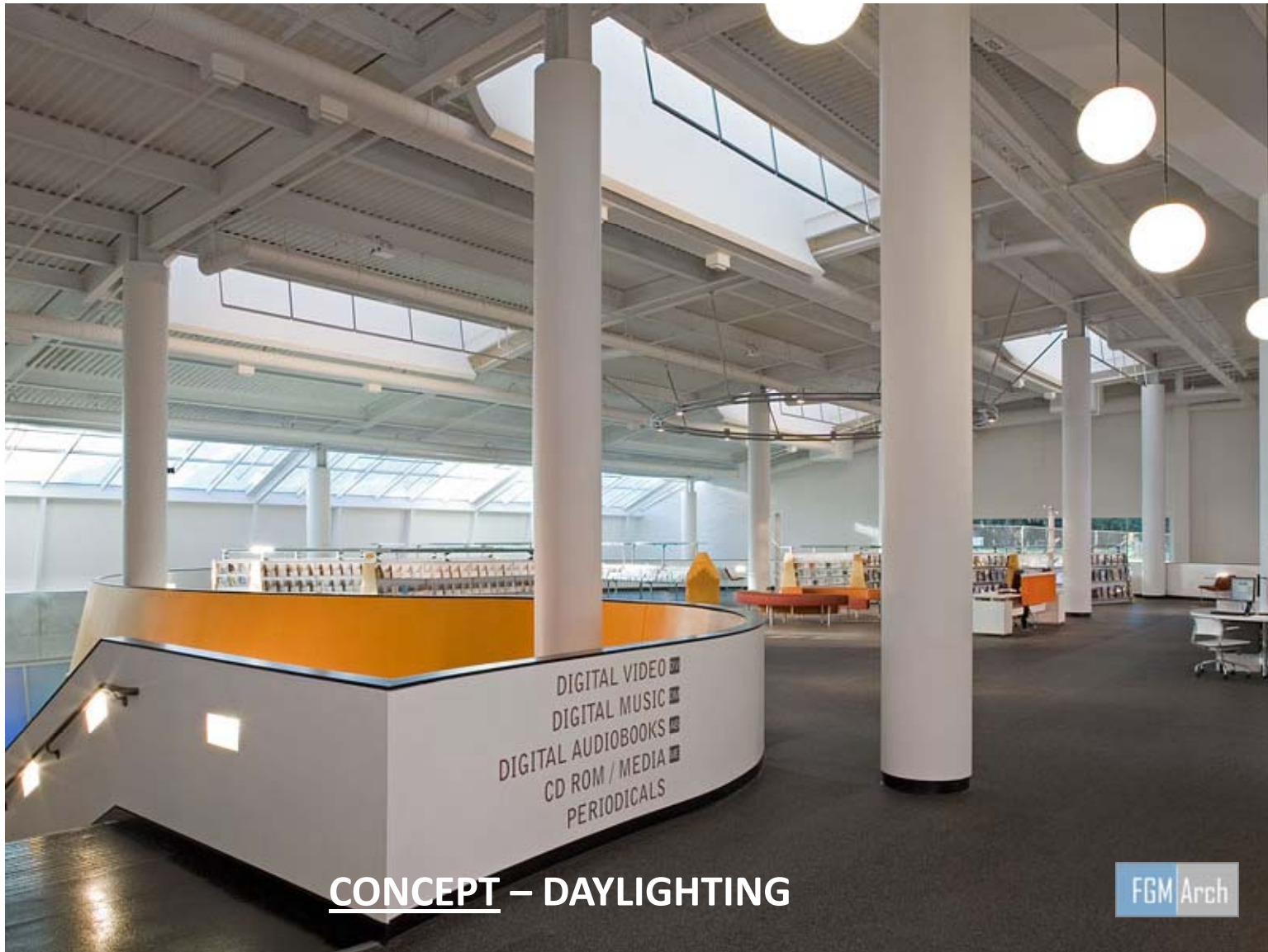


POD1



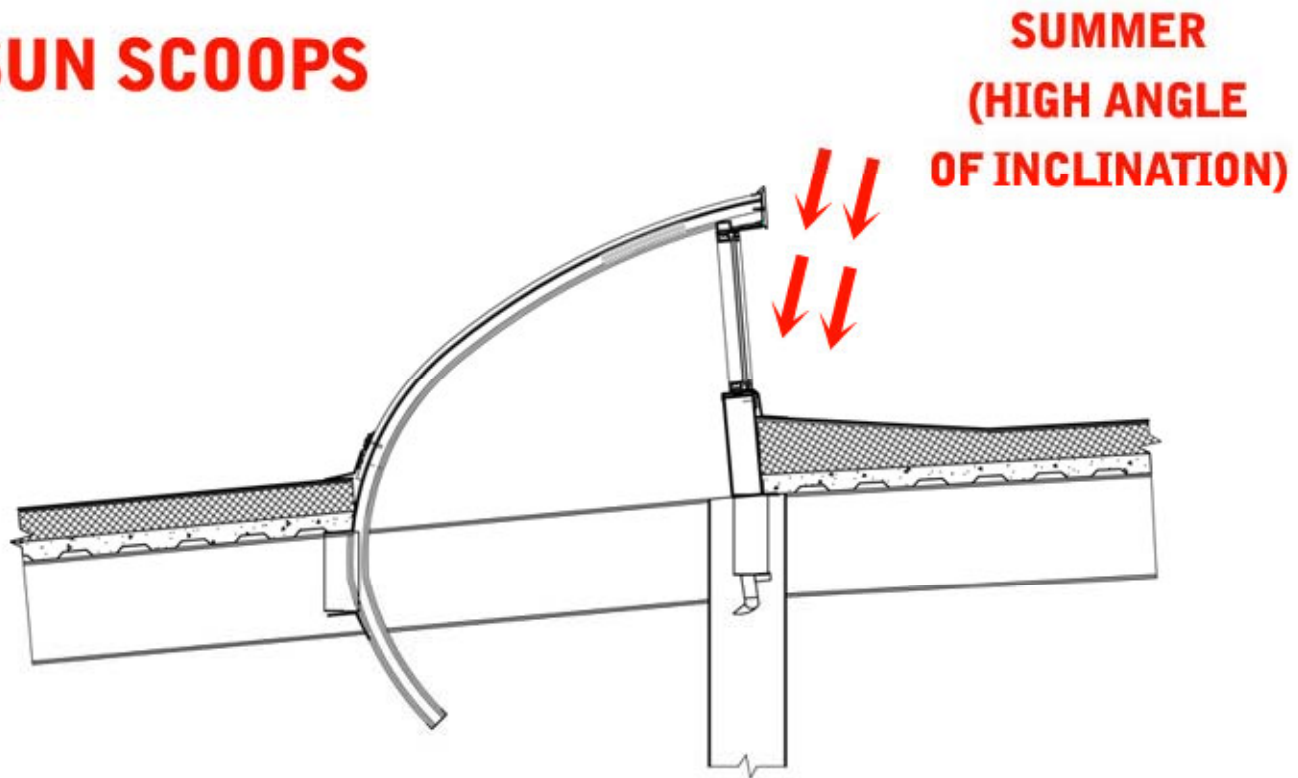
POD2

FGM Arch



CONCEPT – DAYLIGHTING

SUN SCOOPS

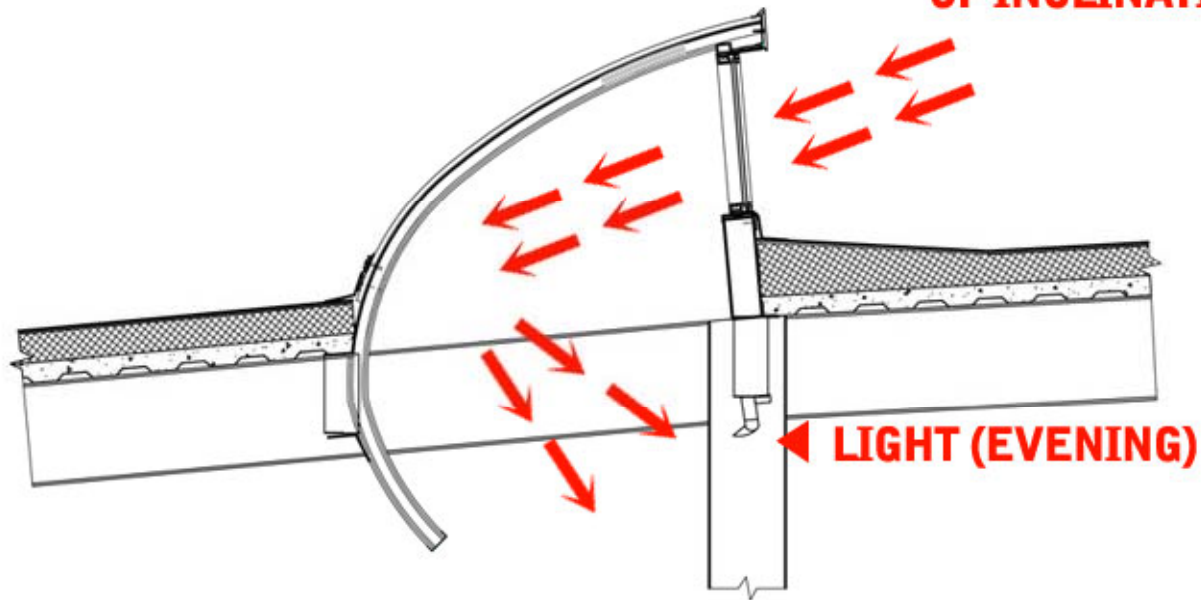


**SUMMER
(HIGH ANGLE
OF INCLINATION)**

MOSTLY INDIRECT LIGHT

SUN SCOOPS

WINTER
(LOW ANGLE
OF INCLINATION)



MOSTLY DIRECT / REFLECTED LIGHT



2006

FGM Arch



2006



CONCEPT – EFFICIENCY

FGM Arch











2006



CONCEPT – COLOR AND FORM









FGM Arch









OUTCOME – A NEW LANDMARK

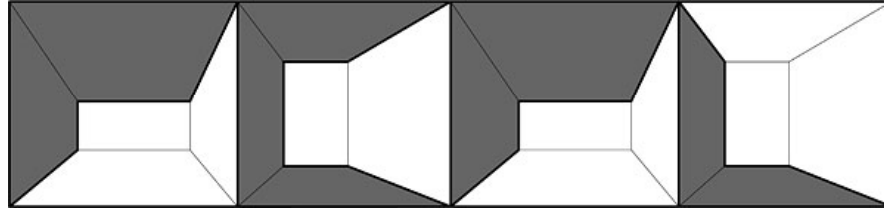
FGM Arch











The Poplar Creek Public Library
Streamwood, IL

Frye Gillan Molinaro Architects

contact: tonyr@fgmarch.com

Website: <http://www.fgmarch.com>

